

# NYC'S WORST BATHROOM DESIGN CHALLENGE

Architizer, AF New York

# FACING THE DOOR



- |                         |                       |                       |
|-------------------------|-----------------------|-----------------------|
| 00_ CURRENT PLAN        | 05_ MAIN VIEW         | 11_ FLOOR & COATING   |
| 00_ CURRENT STATUS      | 06_ ANOTHER VIEW      | 12_ FLOOR & COATING   |
| 01_ REPORT & ELEVATION  | 07_ LIST OF MATERIALS | 13_ LIGHTING SCHEME   |
| 02_ REPORT & ELEVATIONS | 08_ GENERAL PLAN      | 14_ LIGHTS            |
| 03_ REPORT & ELEVATIONS | 09_ DRAIN PLAN        | 15_ KENNY'S WISH LIST |
| 04_ REPORT & ELEVATION  | 10_ WALL HUNG TOILET  | 16_ LAST LOOK         |

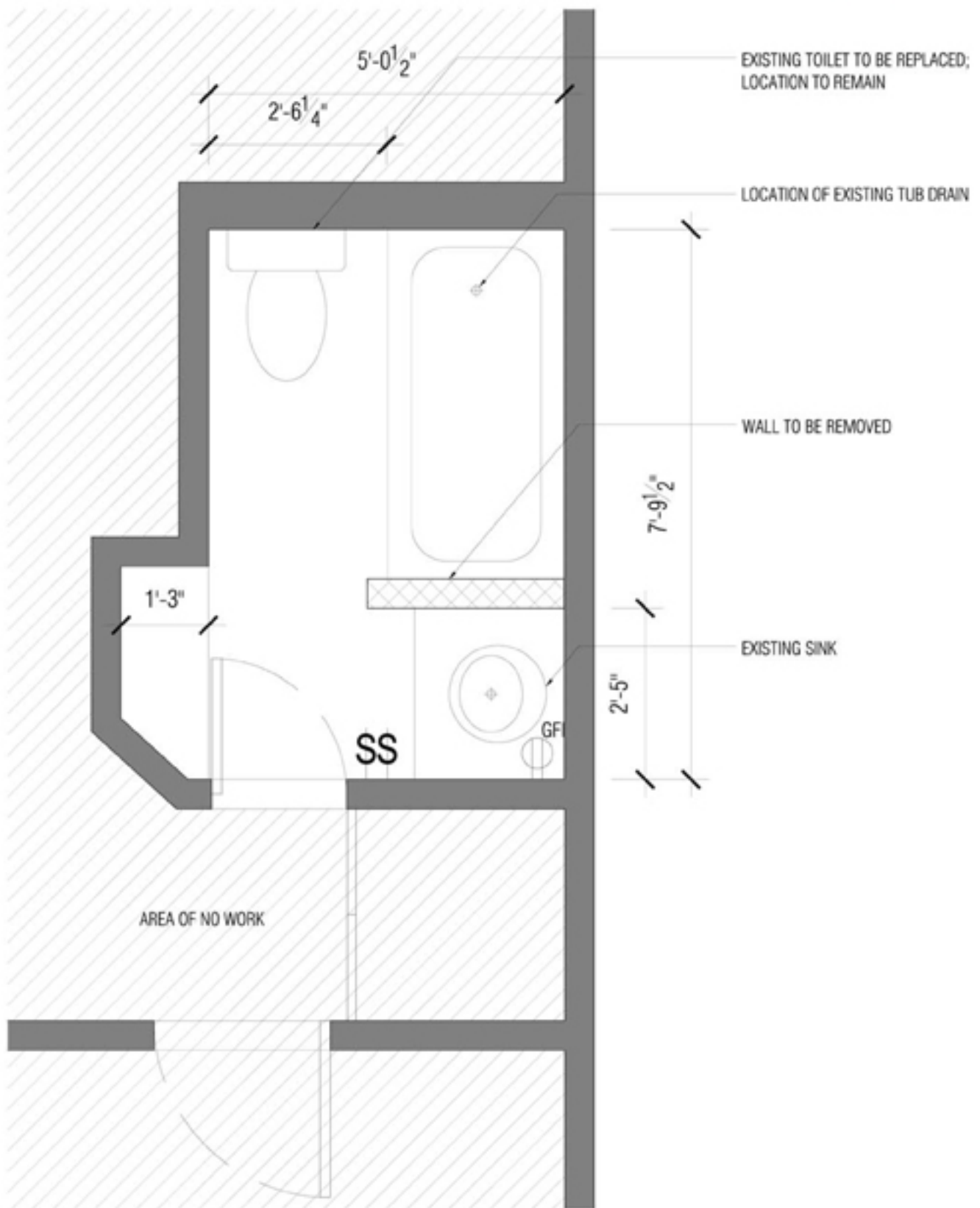
**RAFFAELE CAVAZZONI / architect**

via A. Mantegna, 58 - 46010 Curtatone (MN)- ITALY  
arch.cavazzoni@gruppocreta.com

# NYC'S WORST BATHROOM DESIGN CHALLENGE

Architizer, AF New York

## FACING THE DOOR



## CURRENT PLAN

Scale:  $1/2" = 1'-0"$

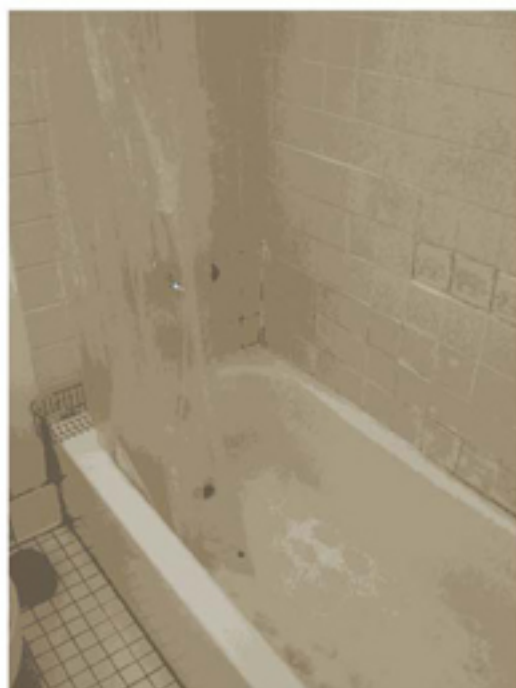
RAFFAELE CAVAZZONI / architect

via A. Mantegna, 58 - 46010 Curtatone (MN) - ITALY  
arch.cavazzoni@gruppoceffa.com

# NYC'S WORST BATHROOM DESIGN CHALLENGE

Architizer, AF New York

FACING THE DOOR



NO COMMENT !!!



CURRENT STATUS

RAFFAELE CAVAZZONI / architect

via A. Mantegna, 58 - 46010 Curtatone (MN) - ITALY  
arch.cavazzoni@gruppocrete.com

# NYC'S WORST BATHROOM DESIGN CHALLENGE

Architizer, AF New York

FACING THE DOOR



Left wall elevation (Scale: 1/2" = 1'-0")

Before to study this solution, I first posed to myself the problem of trying to fulfill the wishes expressed by the owner. These requests are directed to solve functional needs. To meet these desires sharable, we must imagine an ideal redistribution of the spaces.

Finding the best design solution possible even in aesthetic and formal terms, it is more challenging for two reasons:

- The first reason is the size, given the need to imagine the "beautiful" in a perfect harmonization of architectural spaces and elements contained therein, in a limited space available;
- The second is a philosophical-aesthetic reason, and derives from the consideration that every time we open a door, we fix our eyes on a new world and in this case, opening the bathroom door, it is not gratifying that the first gaze falls on the toilet, rather than on something nice as it could be a particularly nice furniture, a sink, a mirror, a window. It's the difference between the expectations of a latrine and a bathroom, though small in size. The bathroom is the first place where we go in the morning, barely awake and is the last where we go at night before bedtime: the importance of enjoying a nice bath is essential for the successful launch of a new day and for its good closure.

# NYC'S WORST BATHROOM DESIGN CHALLENGE

Architizer, AF New York

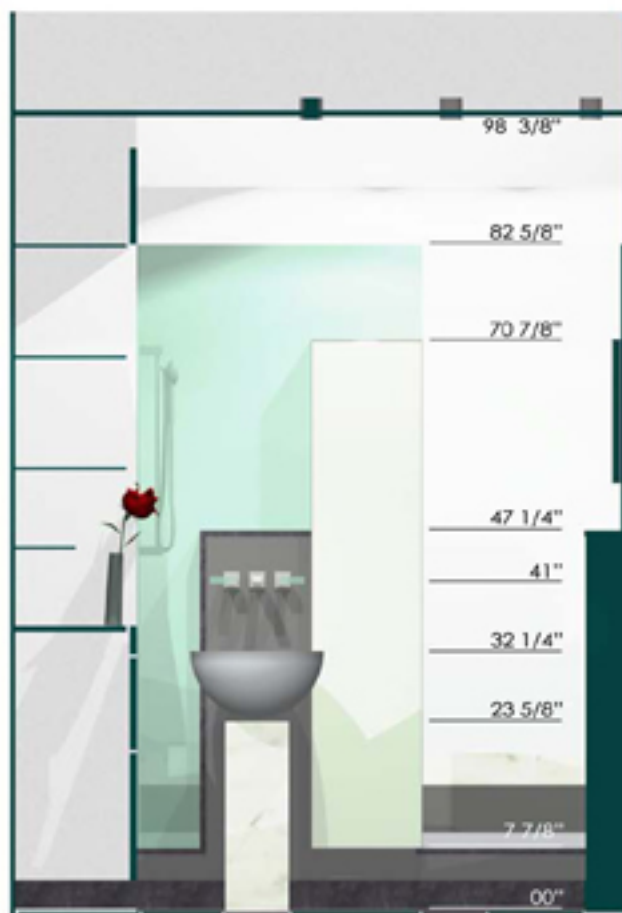
## FACING THE DOOR

It's a matter of sensibility, so important to me, that I believe in the bathroom, in general, are also crucial three different light levels, because during the day we use our own bathroom with different needs. In the morning, just wake up or at night, we and our eyes can not suffer a traumatic lighting, but we need a silent light, sweet, very widespread, but enough to read the newspaper or our favorite book when we are sitting on our toilet.

Surely we also shall need, to make a beard, or when our girl-friend will do make-up, the possibility of exploiting enhanced lighting focused on what we're doing. Finally, in special cases when something small falls to the ground, we will be happy to take advantage of the sum of both light lines for being sure, with the maximum of lighting, to find what we seek.

Therefore, for my kind of architectural interpretation of residential living space, keep the toilet in his current position, would constrain the design approach to an aesthetic condition conceptually not acceptable, making impossible any viable solution prestigious.

I have consequently decided to meet all the requirements, but even to change position to the toilet, also because this does not pose any technical problem-functional: of course, the important thing is do not change the position of the



Front wall elevation (Scale: 1/2" = 1'-0")



Shower wall elevation (Scale 1/2" = 1'-0")

# NYC'S WORST BATHROOM DESIGN CHALLENGE

Architizer, AF New York

## FACING THE DOOR



Rear shower wall elevation (Scale 1/2" = 1'-0")



Rear door wall elevation (Scale 1/2" = 1'-0")

exhaust, not that of the toilet. The height of drain the wall hung toilet in the selected location proposed makes it possible to have an adequate slope to reach the existing drain hole without any problem. The development of the discharge pipe is almost 9'-10 1/8", with a gradient 11", between the bottom of the exhaust pipe of the toilet and the bottom of the existing drain hole. The result is a slope of more than 9%, more than three times the minimum required in these cases and that for prudence can be raised to 10% simply by fixing the toilet at a height of 16 1/2" instead of 15 3/4".

The functionality of the drain pipe, thus built, would be guaranteed by the possibility of inspection plug hidden by a retractable plate. If you do not feel to take this hydraulic solution based on the principles of physics, you can safely adopt one based on mechanics: there are on the market, from many years, various systems of grinding-pumping, completely reliable, able to discharge with small diameter pipes in considerable distances. (see for example : [www.sanitrit.it](http://www.sanitrit.it) or [www.saniflo.com/](http://www.saniflo.com/))

# NYC'S WORST BATHROOM DESIGN CHALLENGE

Architizer, AF New York

## FACING THE DOOR

My idea of the project can achieve three important results: the first is functional and with no problem exhaust, the second is of ergonomic type with more livable space for a place where you can open your arms in all dimensions and the third with a resolution of aesthetic harmony, where the toilet is not immediately in sight, but hidden on the side and a separate shower area very important and pleasurable.



Right wall elevation (Scale: 1/2" = 1'-0")

This solution, first of all, can meet the demands of the customer and then satisfies my need to achieve. for the proposed topic, the ideal solution.

# NYC'S WORST BATHROOM DESIGN CHALLENGE

Architizer, AF New York

FACING THE DOOR



From the entrance of the bathroom

05

MAIN VIEW

RAFFAELE CAVAZZONI / architect

via A. Mantegna, 58 - 46010 Curtatone (MN) - ITALY  
arch.cavazzoni@gruppoceffa.com



# NYC'S WORST BATHROOM DESIGN CHALLENGE

Architizer, AF New York

FACING THE DOOR



from the shower

06

ANOTHER VIEW

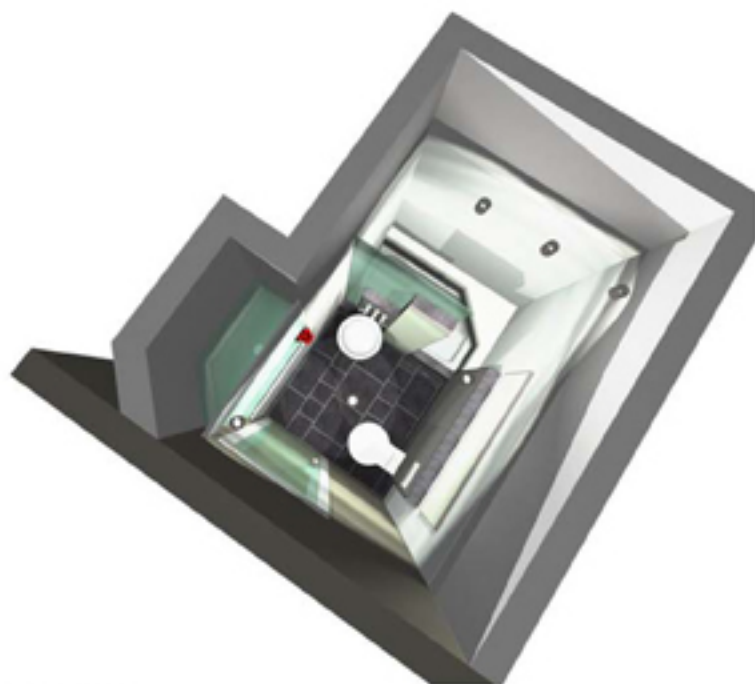
RAFFAELE CAVAZZONI / architect

via A. Mantegna, 58 - 46010 Curtatone (MN) - ITALY  
arch.cavazzoni@gruppocrete.com

# NYC'S WORST BATHROOM DESIGN CHALLENGE

Architizer, AF New York

## FACING THE DOOR



### FLOOR AND WALLS

- \_ Natural slate flooring (not polished), gray (not black);
- \_ Walls of the toilet and washbasin, bordered in natural slate and finished with slate-gray color polished plaster;
- \_ Shower coating of white Carrara marble or in ceramic tile 7 7 / 8 "x7 7 / 8", white glossy color;
- \_ Washbasin base in white Carrara marble;
- \_ Bench in shower in white Carrara marble;
- \_ Clear glass to complement the wall between the sink and shower;
- \_ Waterproof plasterboard ceiling panels, painted light gray, like the remaining walls not coated;
- \_ Horizontal (13 3/4" x 63") and vertical (49 1/4" x 17 3/4") mirrors, mounted on aluminum frame with neon lighting, inserted at the top.

### SANITARYWARE

- \_ DURAVIT Starck #720035 Rectangular shower tray 55 1/8" x 31 15/16" Inch Color: 00 White Alpin;
- \_ DURAVIT Starck 1 #021009 Toilet wall mounted 16 1/8" x 22 5/8" Inch Color: 00 White Alpin;
- \_ DURAVIT Bacino #032542 WashBasin with overflow, without tap platform, 16 1/2" Inch Color: 00 White Alpin;
- \_ BRIZO Siderna #65881LF-PC Two Handle Wall-Mount Vessel Lavatory Faucet with Glass Handle Accents Color: Chrome;
- \_ BRIZO Siderna Medium Flow Custom Shower.

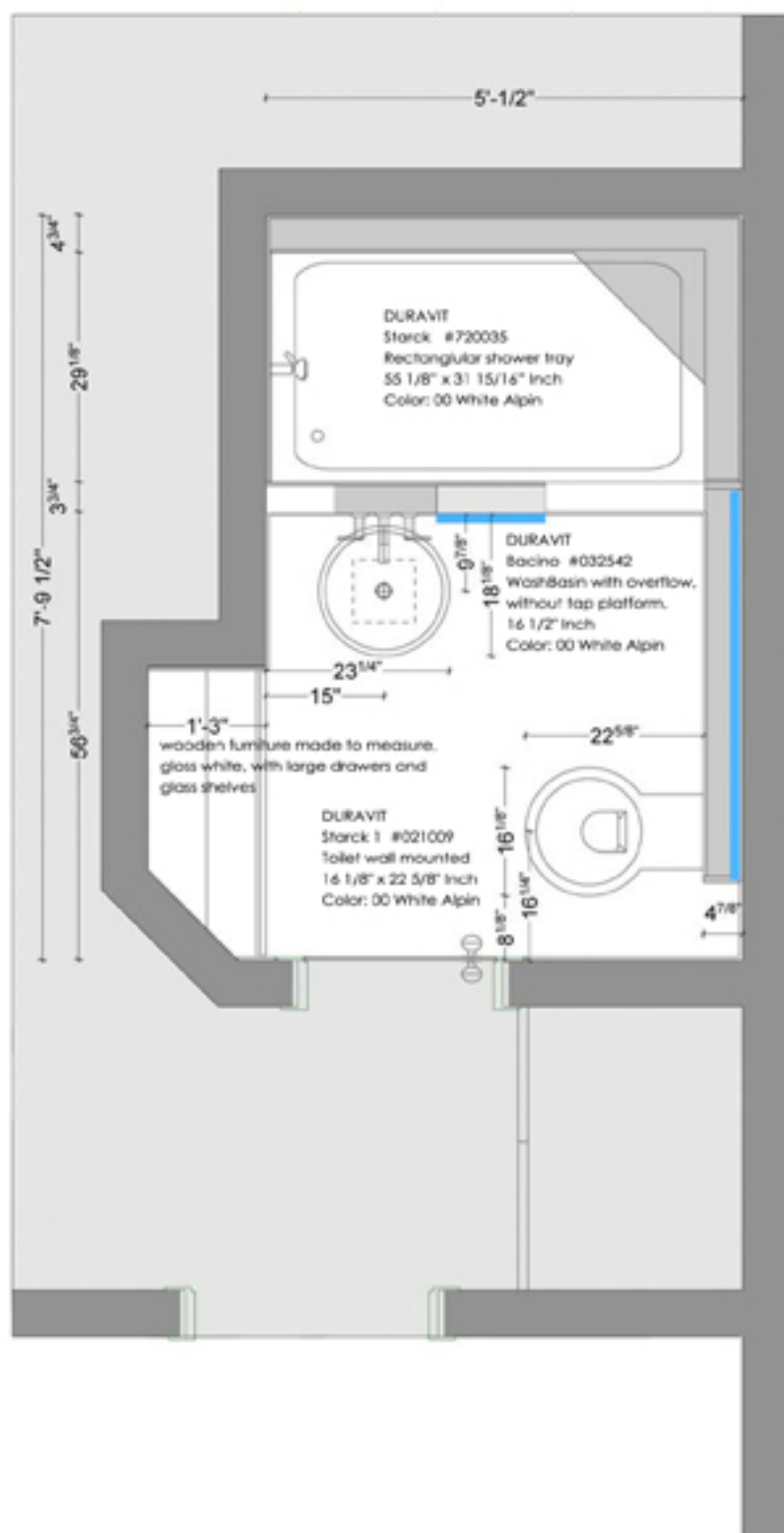
### LIGHTING

- \_ Diffuse illumination by neon inserted in the frames of mirrors;
- \_ Most powerful light with LED lights recessed in the suspended ceiling;
- \_ Electric outlet for razor and hair dryer to the left of the washbasin;
- \_ Alarm in the shower with the ring out of the bathroom door;
- \_ Automatic extractor fan.

# NYC'S WORST BATHROOM DESIGN CHALLENGE

Architizer, AF New York

FACING THE DOOR



BRIZO Sidema Medium Flow Custom Shower



BRIZO Sidema #65881UF-PC Two Handle Wall-Mount Vessel Lavatory Faucet with Glass Handle Color: Chrome



DURAVIT Bacino #032542



DURAVIT Starck 1 #021009

DURAVIT Starck #720035



08

GENERAL PLAN

Scale: 1/2" = 1'-0"

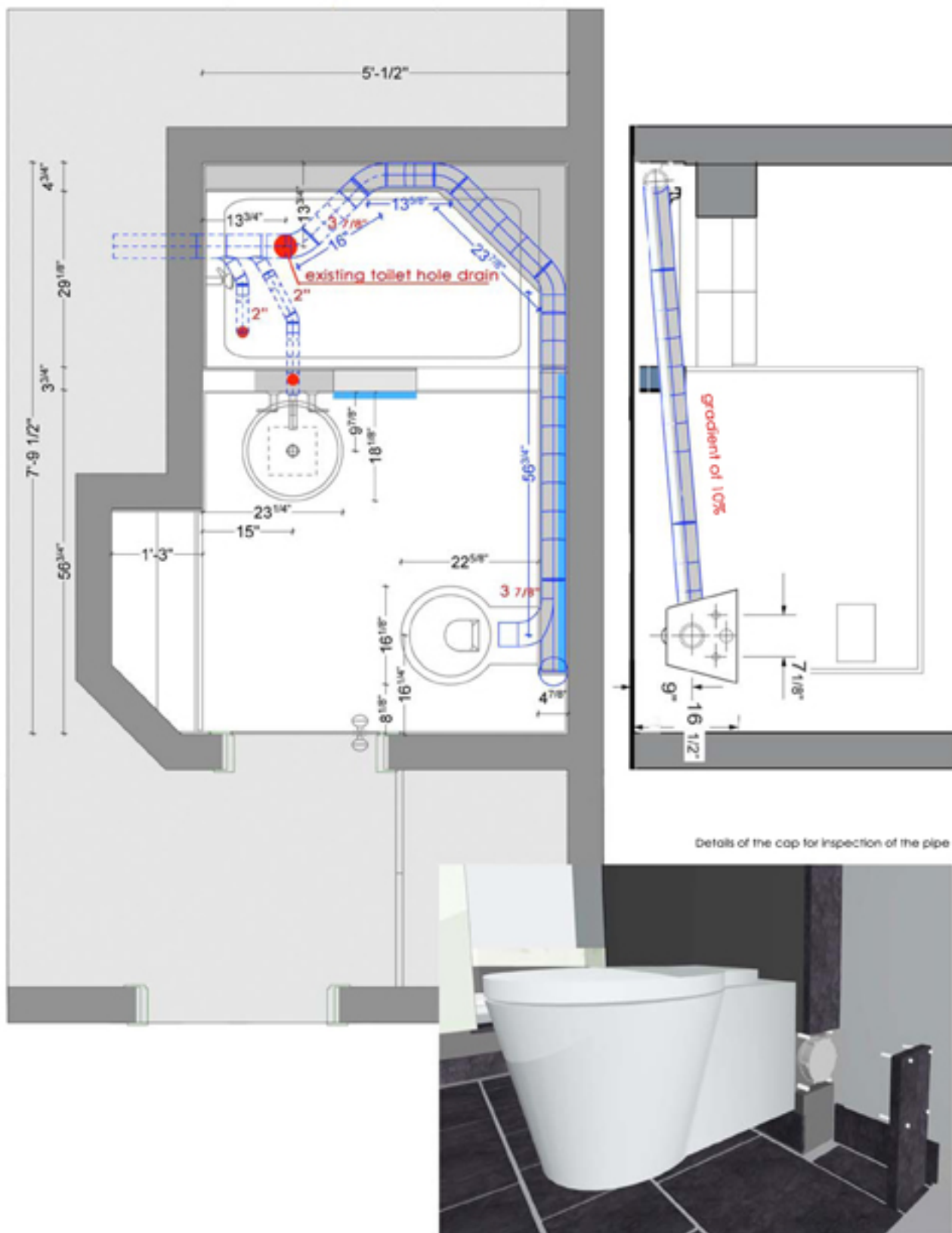
RAFFAELE CAVAZZONI / architect

via A. Mantegna, 58 - 46010 Curtatone (MN) - ITALY  
arch.cavazzoni@gruppocreta.com

# NYC'S WORST BATHROOM DESIGN CHALLENGE

Architizer, AF New York

FACING THE DOOR



09

## DRAIN PLAN

Scale: 1/2" = 1'-0"

RAFFAELE CAVAZZONI / architect

via A. Mantegna, 58 - 46010 Curtatone (MN) - ITALY  
arch.cavazzoni@gruppoconcreta.com

# NYC'S WORST BATHROOM DESIGN CHALLENGE

Architizer, AF New York

## FACING THE DOOR

<http://www.duravit.us/products/wall-hung-toilets-useo7edjet.html>



### water saving:

Geberit's dual-flush system exceeds HET standards, providing a blended use of 1.1 gallons per flush. By allowing a 0.8 GPF for liquid waste or the full 1.6 GPF, this system provides the users an efficient means by which to conserve water on a daily basis.



### space saving:

The Geberit carrier fits within a standard 2"x 6" wall reducing the Duravit toilet bowl projection by up to 8". The concealed HDPE one-piece tank is individually leak-tested, providing the user trouble-free, space saving reliability.



### highly aesthetic:

Easy access to all of the mechanical functions is provided through the elegant flush actuators. High flexibility of design choice complements most aesthetic considerations allowing ease of use in any bathroom. From traditional to modern, there is a combination for your lifestyle.



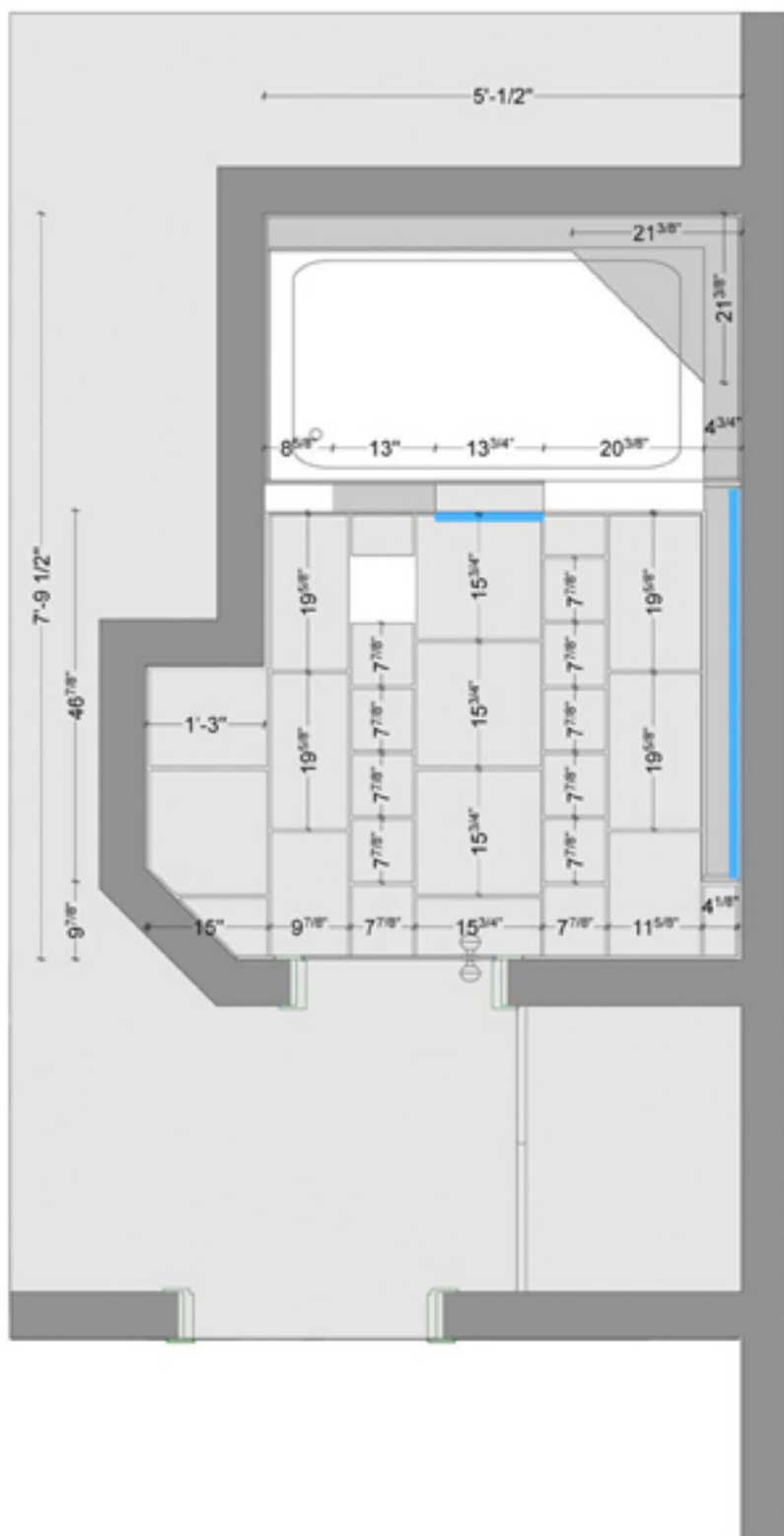
### perfectly hygienic:

Concealed in the wall and suspended off the floor, the Duravit wall hung toilet provides an ease of use like no other toilet available. Easy to clean and trouble-free maintenance provide for smart, lasting design.

# NYC'S WORST BATHROOM DESIGN CHALLENGE

Architizer, AF New York

FACING THE DOOR



Details of the marble base of the basin: front



Details of the marble base of the basin: back

11

FLOOR & COATING

Scale: 1/2" = 1'-0"

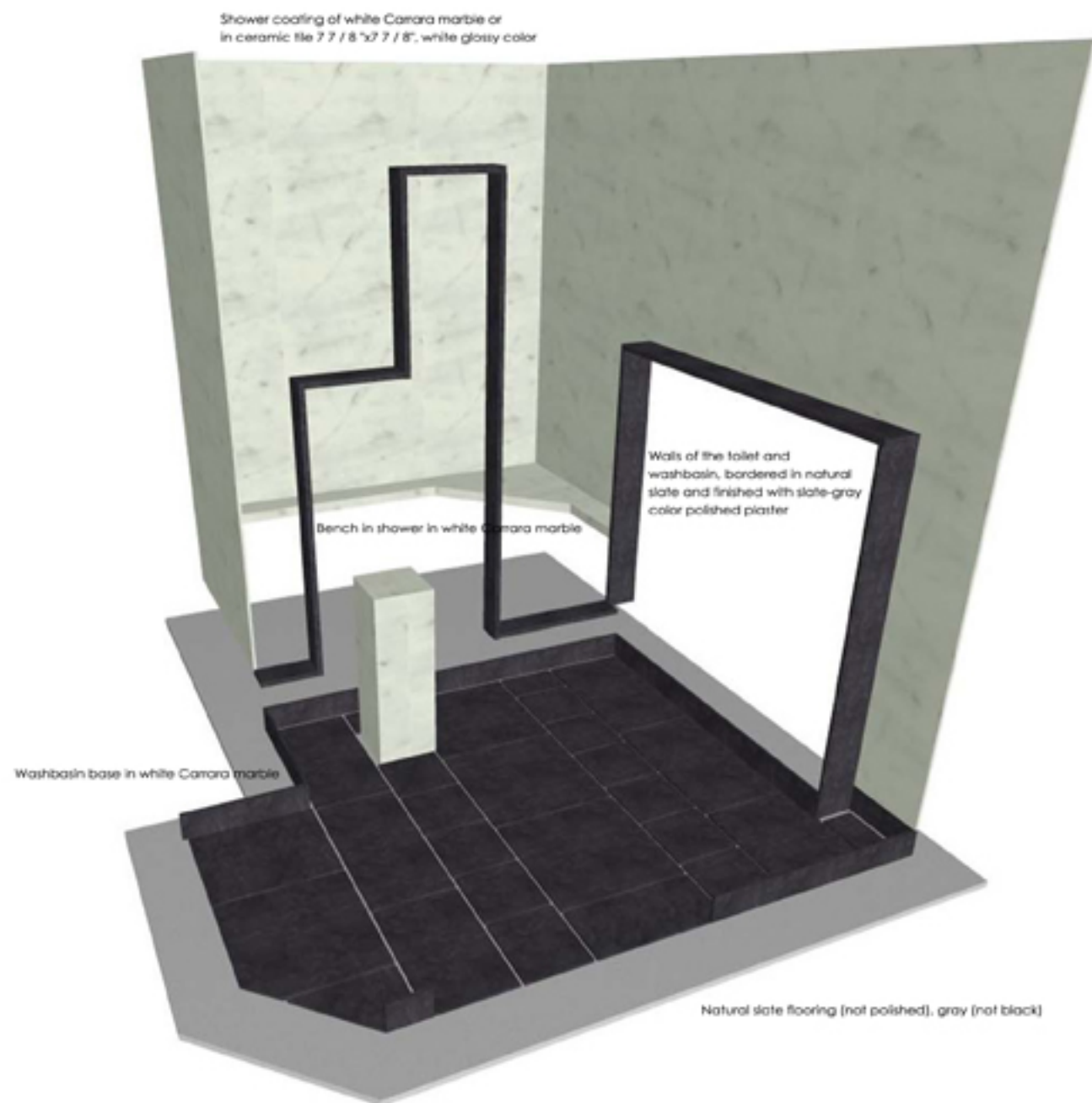
RAFFAELE CAVAZZONI / architect

via A. Manlegna, 58 - 46010 Curtatone (MN) - ITALY  
arch.cavazzoni@gruppocrete.com

# NYC'S WORST BATHROOM DESIGN CHALLENGE

Architizer, AF New York

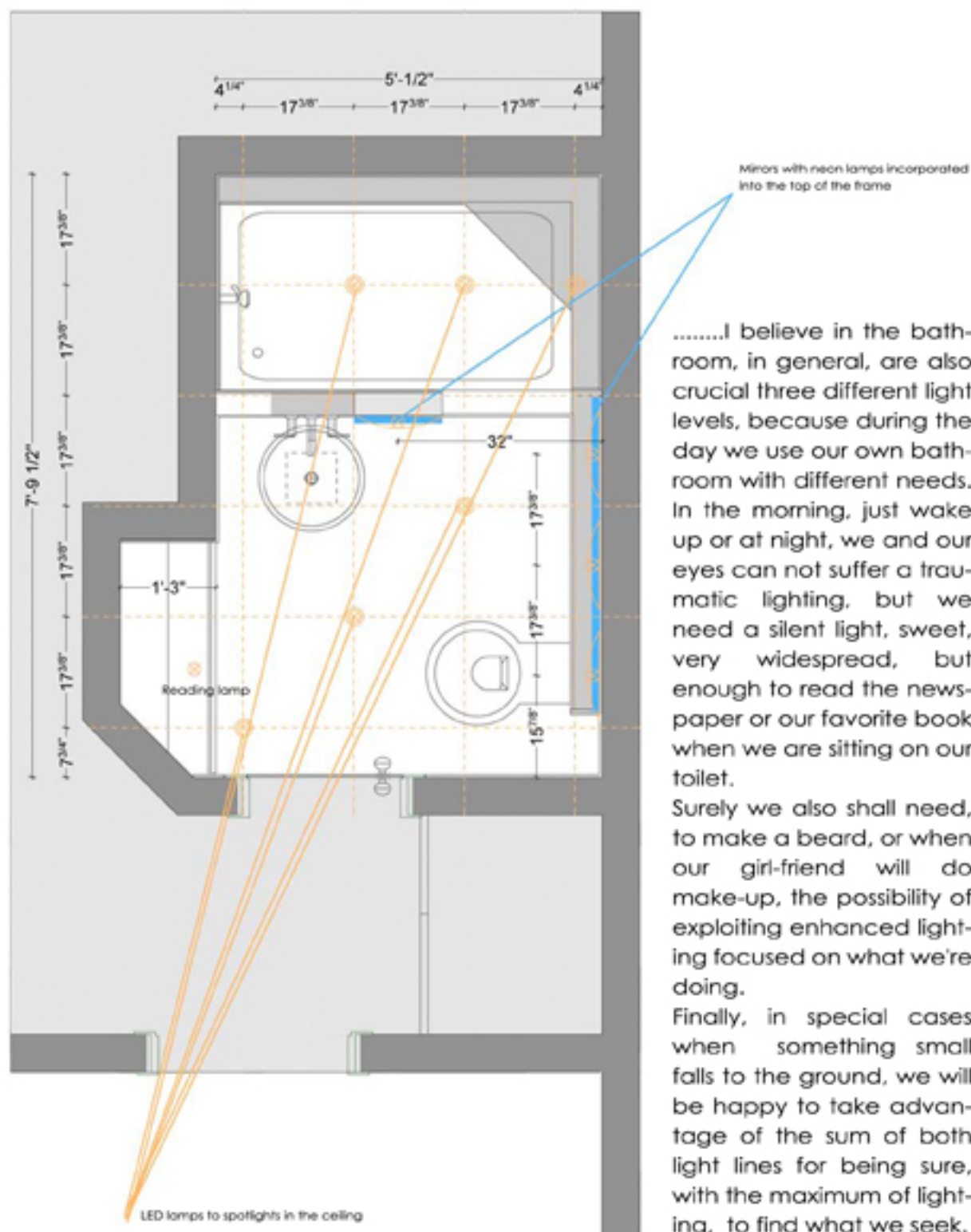
FACING THE DOOR



# NYC'S WORST BATHROOM DESIGN CHALLENGE

Architizer, AF New York

## FACING THE DOOR



.....I believe in the bathroom, in general, are also crucial three different light levels, because during the day we use our own bathroom with different needs. In the morning, just wake up or at night, we and our eyes can not suffer a traumatic lighting, but we need a silent light, sweet, very widespread, but enough to read the newspaper or our favorite book when we are sitting on our toilet.

Surely we also shall need, to make a beard, or when our girl-friend will do make-up, the possibility of exploiting enhanced lighting focused on what we're doing.

Finally, in special cases when something small falls to the ground, we will be happy to take advantage of the sum of both light lines for being sure, with the maximum of lighting, to find what we seek.



# NYC'S WORST BATHROOM DESIGN CHALLENGE

Architizer, AF New York

FACING THE DOOR



1\_  
A soft light, diffused, muted by  
the neon lights hidden at the  
top frame mirrors.

2\_  
More light through the LED  
lights recessed in the ceiling.

3\_  
Maximum illumination, lighting  
the two lines together.



# NYC'S WORST BATHROOM DESIGN CHALLENGE

Architizer, AF New York

## FACING THE DOOR

- **Ability to drink directly from the sink.**

Ok: the tap is not on the sink, but it is fixed to the wall and distant from 7 7/8" to 9 7/8" over the edge of the washbasin.

- **Separate hot and cold water valves**

Ok: the taps are BRIZO, series Siderna with separate hot and cold valves, and their line, very clean, minimalist and geometric, makes them very attractive in my opinion, especially those with glass.

- **Soap dishes that do not collect water**

Ok: there will necessary two containers for soap: one for the sink and one for the shower.

Although I am personally driven to use for hands, the most sanitary soap dispenser, on the shelf of the washbasin wall, will easy put a soap dish as required, so also on the shelf next to the shower, where an alternative can be set at wall.

- **Ability to hang wet clothes**

Ok: into shower space, could be put a disappearance drying rack, that will remain hidden, even when fully open, behind the washbasin wall.

- **Tankless toilet if possible**

Ok: the Geberit hung box is the best solution aesthetically, but also the most hygienic and the best way to save water.

- **Bench in shower**

Ok: made of white statuary marble from Carrara, aesthetically pleasing, the angle seat is connected with the shelf that covers the pipe and this made it is twice as functional as it serves as a relax seat and, at the same time, allows you to cover the curve of the toilet drain pipe.

- **Awesome mirror above sink and also in shower (antifog a plus!)**

Ok: The important vertical mirror next to the sink allows you to see the whole figure, while the large horizontal and along above the wall expands the toilet space and doubles the light. You could put in the shower from the shelf of the bench, but frankly I feel discouraged, because it becomes too difficult to have to clean after each shower. Diffuse illumination by neon inserted in the frames of mirrors.

- **A bright and light space**

Ok: There are three levels of illumination: diffused through a neon inserted in the frames of mirrors, the other more powerful delegated to LED lights recessed in the ceiling and the sum of all the lights. Both types of neon and LED are specific for energy saving.

- **Easy to clean and looks clean , even when dirty**

Ok: the bathroom, distributed in this way, allows you to move better in two specific areas, one identified by the shower and the other from the rest of the bath surface smoother, less sacrificed and therefore easier to clean. In addition, the hung wall toilet and the box Geberit allow easy and hygienic cleaning.

- **Powerful showerhead plus a handheld shower spray**

Ok: the choice of Brizo is a choice of quality and the range Siderna with their line very clean, minimalist and geometric in my opinion makes them very beautiful but also very functionals.

# NYC'S WORST BATHROOM DESIGN CHALLENGE

Architizer, AF New York

FACING THE DOOR



GOOD NIGHT III

16

LAST LOOK

RAFFAELE CAVAZZONI / architect

via A. Mantegna, 58 - 46010 Curtatone (MN) - ITALY  
arch.cavazzoni@gruppocrete.com